



AIR COMPRESSOR

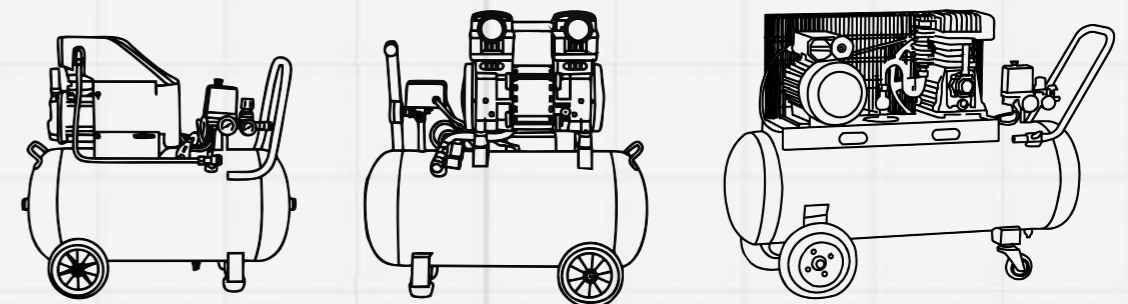
BISON AIMS TO OFFER DISTRIBUTORS A DIVERSE RANGE OF AIR
COMPRESSORS BY RESPONSIVE SERVICE.



TAIZHOU BISON MACHINERY CO.,LTD.

Add: Build D, No.1515 Fengnan East Road, JiaoJiang,
Taizhou City, Zhejiang Province China
Tel: 0086-576-88205202

<http://www.bisoncompressor.com>



PRODUCTION SHOP



01 EFFICIENT & PRECISE

Each process is completed by the domestic high-end processing equipment, through a complete set of advanced processing equipment to ensure that products in the processing accuracy and matching in the market leader.



02 PROFESSIONAL & CONTROL

Company in the production process in strict accordance with international quality system standards, production departments in the picking must carry out prenatal inspection, the production process of each process must be inspected, after the completion of the process must be a full range of product performance testing.



03 LEAN MANAGEMENT

Company strictly enforce the age management, location management, inventory early warning, through the strict requirements of inventory management, can ensure a reasonable safety inventory, in order to meet customer demand for order delivery timely, convenience.

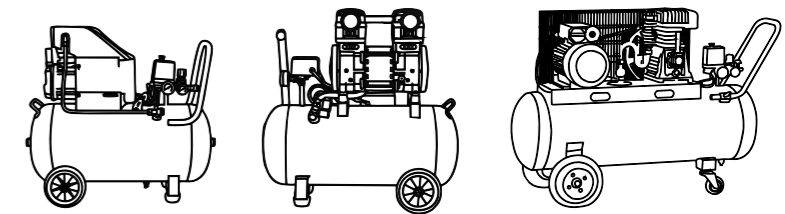
PRODUCTION
PROCESS





Born for the ultimate

DIRECT OIL LUBRICATED COMPRESSOR	01-07
SILENCE OILFREE COMPRESSOR	08-10
Low Noise 2 Pole OILFREE COMPRESSOR	11-15
BELT OIL LUBRICATED COMPRESSOR	16-21
AIR COMPRESSOR HEAD	22-24
ACCESSORIES	25-26
DIAGRAM	27-28



Products contents

DIRECT OIL LUBRICATED COMPRESSOR





DIRECT OIL LUBRICATED COMPRESSOR



TECHNICAL PARAMETER

Model	Tank		Voltage/ Frequency V/Hz	Power		Speed rpm	Noise dB	Air Displacement		Work Pressure		N.W kg	Dimensions L*W*H (cm)	MOQ		
	L	Gal		kW	HP			L/min	CFM	Bar	Psi			20'	40'	40'H
DO42TA-24	24	6.3	230/50	1.1	1.5	2850	85	135	4.8	8.0	115	20	58.5x25.5x58	360	720	720
DO42TA-24	24	6.3	120/60	1.1	1.5	3450	88	155	5.5	8.8	125	21	58.5x25.5x58	360	720	720
DO47TA-24	24	6.3	230/50	1.5	2.0	2850	89	185	6.4	8.0	115	22	58.5x25.5x58	360	720	720
DO47TA-24	24	6.3	120/60	1.7	2.5	3450	91	240	8.5	8.8	125	24	58.5x25.5x58	360	720	720
DO51TA-24	24	6.3	230/50	1.7	2.5	2850	89	240	8.5	8.0	115	24	58.5x25.5x58	360	720	720

DIRECT OIL LUBRICATED COMPRESSOR



Model	DO42TA-8		
Tank	L	6	10
	Gal	2.5	2.5
Voltage/ Frequency V/Hz	230/50		120/60
	Power	kW	1.1
HP		1.5	1.5
Speed	rpm		2850
	rpm		3450
Noise	dB		85
	dB		88
Air Displacement	L/min	135	155
	CFM	4.8	5.5
Work Pressure	Bar	8	8.8
	Psi	115	125
N.W	kg		16
	kg		17
Dimensions	L*W*H (cm)		49x21x50.5
	L*W*H (cm)		51x23x53.5
MOQ	20'	528	456
	40'	1056	912
	40'H	1320	1140



Model	DO47TA-50		DO51TA-50	
Tank	L	50	50	50
	Gal	12.6	12.6	12.6
Voltage/ Frequency V/Hz	230/50		120/60	230/50
	Power	kW	1.5	1.7
HP		2.0	2.5	2.5
Speed	rpm		2850	2850
	rpm		3450	2850
Noise	dB		89	89
	dB		91	89
Air Displacement	L/min	185	240	240
	CFM	6.4	8.5	8.5
Work Pressure	Bar	8.0	8.8	8.0
	Psi	115	125	115
N.W	kg		33	34
	kg		34	34
Dimensions	L*W*H (cm)		74x33x72	74x33x72
	L*W*H (cm)		74x33x72	74x33x72
MOQ	20'	156	156	156
	40'	315	315	315
	40'H	315	315	315



05-06

DIRECT OIL LUBRICATED COMPRESSOR

DIRECT OIL LUBRICATED COMPRESSOR



Model	DO47BM-50		DO51BM-50	
Tank	L	50	50	
	Gal	12.6	12.6	
Voltage/Frequency	V/Hz	230/50	120/60	
	V/Hz	230/50	230/50	
Power	kW	1.5	1.7	
	HP	2.0	2.5	
Speed	rpm	2850	3450	
Noise	dB	89	91	
Air Displacement	L/min	185	240	
	CFM	6.4	8.5	
Work Pressure	Bar	8.0	8.8	
	Psi	115	125	
N.W	kg	33	34	
Dimensions	L*W*H (cm)	74x33x72	74x33x72	
	MOQ	20'	156	156
		40'	315	315
		40'H	315	315

TECHNICAL PARAMETER

Model	Tank		Voltage/Frequency	Power		Speed	Noise	Air Displacement		Work Pressure		N.W	Dimensions	MOQ		
	L	Gal		V/Hz	kW			HP	L/min	CFM	Bar			Psi	kg	L*W*H (cm)
DO42BM-24	24	6.3	230/50	1.1	1.5	2850	85	135	4.8	8.0	115	20	58.5x28.5x63	270	540	640
DO42BM-24	24	6.3	120/60	1.1	1.5	3450	88	155	5.5	8.8	125	21	58.5x28.5x63	270	540	640
DO47BM-24	24	6.3	230/50	1.5	2.0	2850	89	185	6.4	8.0	115	22	58.5x28.5x63	270	540	640
DO47BM-24	24	6.3	120/60	1.7	2.5	3450	91	240	8.5	8.8	125	24	58.5x28.5x63	270	540	640
DO51BM-24	24	6.3	230/50	1.7	2.5	2850	89	240	8.5	8.0	115	24	58.5x28.5x63	270	540	640



Model	DO47BM-50V		DO51BM-50V	
Tank	L	50	50	
	Gal	12.6	12.6	
Voltage/Frequency	V/Hz	230/50	120/60	
	V/Hz	230/50	230/50	
Power	kW	1.5	1.7	
	HP	2.0	2.5	
Speed	rpm	2850	3450	
Noise	dB	89	91	
Air Displacement	L/min	185	240	
	CFM	6.4	8.5	
Work Pressure	Bar	8.0	8.8	
	Psi	115	125	
N.W	kg	38	39	
Dimensions	L*W*H (cm)	45x42x114	45x42x114	
	MOQ	20'	140	140
		40'	280	280
		40'H	280	280



DIRECT OIL LUBRICATED COMPRESSOR



Model	DV47-50	DV47-100
L	50	50
Tank Gal	12.6	12.6
Voltage/Frequency V/Hz	230/50	230/50
Power kW/HP	2.2/3.0	2.2/3.0
Speed rpm	2850	2850
Noise dB	90	90
Air Displacement L/min/CFM	360/12.7	360/12.7
Work Pressure Bar/Psi	8/115	8/115
Weight kg N.W	42	55
Dimensions L*W*H (cm)	76x38.5x72	90x42x77
MOQ	20' 40' 40'H	102 207 207

SILENCE OILFREE COMPRESSOR



Model	OF550-8	
L	8	8
Tank Gal	2.5	2.5
Voltage/Frequency V/Hz	230/50	120/60
Power kW/HP	0.55/0.75	0.55/0.75
Speed rpm	1400	1700
Noise dB	68	70
Air Displacement L/min/CFM	100/3.5	110/3.8
Work Pressure Bar/Psi	8/115	8.8/125
Weight kg N.W	15	15
Dimensions L*W*H (cm)	51x21x50.5	51x21x50.5
MOQ	20' 40' 40'H	528 1056 1320



Model	OF750-24	
L	24	24
Tank Gal	6.3	6.3
Voltage/Frequency V/Hz	230/50	120/60
Power kW/HP	0.75/1.0	0.75/1.0
Speed rpm	1400	1700
Noise dB	70	72
Air Displacement L/min/CFM	130/4.6	150/5.3
Work Pressure Bar/Psi	8/115	8.8/125
Weight kg N.W	23	23
Dimensions L*W*H (cm)	58.5x25.5x58	58.5x25.5x58
MOQ	20' 40' 40'H	360 720 720



SILENCE OILFREE COMPRESSOR



Model	OF550X2-50	OF750X2-50
Tank	L	50
	Gal	12.5
Voltage/ Frequency V/Hz		230/50
		230/50
Power	kW	1.1
	HP	1.5
Speed	rpm	1400
Noise	dB	68
Air Displacement	L/min	200
	CFM	7.0
Work Pressure	Bar	8.0
	Psi	115
N.W	kg	42
Dimensions	L*W*H (cm)	73x33x67
	20' 40' MOQ 40'H	160 330 440

SILENCE OILFREE COMPRESSOR



Model	OF550X3-70	OF750X3-70
Tank	L	70
	Gal	18.5
Voltage/ Frequency V/Hz		230/50
		230/50
Power	kW	1.6
	HP	2.2
Speed	rpm	1400
Noise	dB	68
Air Displacement	L/min	300
	CFM	10.5
Work Pressure	Bar	8.0
	Psi	115
N.W	kg	51
Dimensions	L*W*H (cm)	90x33x67
	20' 40' MOQ 40'H	90 180 180



Model	OF1100x2-50 (四极)	
Tank	L	50
	Gal	12.5
Voltage/ Frequency V/Hz		230/50
		230/50
Power	kW	2.2
	HP	3.0
Speed	rpm	1400
Noise	dB	72
Air Displacement	L/min	384
	CFM	13.5
Work Pressure	Bar	8.0
	Psi	115
N.W	kg	56
Dimensions	L*W*H (cm)	73x33x67
	20' 40' MOQ 40'H	160 330 440



Model	OF1100x3-100 (四极的)	
Tank	L	100
	Gal	25
Voltage/ Frequency V/Hz		230/50
		230/50
Power	kW	3.3
	HP	5.0
Speed	rpm	1400
Noise	dB	72
Air Displacement	L/min	576
	CFM	20.2
Work Pressure	Bar	8.0
	Psi	115
N.W	kg	81
Dimensions	L*W*H (cm)	110x42x84
	20' 40' MOQ 40'H	50 100 150

Low Noise 2 Pole OILFREE COMPRESSOR





Low Noise 2 Pole OILFREE COMPRESSOR



Model	DOF1100-6F	
Tank	L	6
	Gal	2
Voltage/Frequency	V/Hz	230/50
Power	kW	1.1
	HP	1.5
Speed	rpm	2800
Noise	dB	73
Air Displacement	L/min	190
	CFM	6.7
Work Pressure	Bar	8.0
	Psi	115
N.W	kg	16
Dimensions	L*W*H (cm)	50x45x50
MOQ	20'	500
	40'	1000
	40'H	1000

Low Noise 2 Pole OILFREE COMPRESSOR



Model	DOF1100-50	DOF1500-50
Tank	L	50
	Gal	12.5
Voltage/Frequency	V/Hz	230/50
Power	kW	1.1
	HP	1.5
Speed	rpm	2800
Noise	dB	73
Air Displacement	L/min	190
	CFM	6.7
Work Pressure	Bar	8.0
	Psi	115
N.W	kg	36
Dimensions	L*W*H (cm)	73x33x67
MOQ	20'	160
	40'	330
	40'H	440



Model	DOF1100-24	DOF1500-24
Tank	L	24
	Gal	6.3
Voltage/Frequency	V/Hz	230/50
Power	kW	1.1
	HP	1.5
Speed	rpm	2800
Noise	dB	73
Air Displacement	L/min	190
	CFM	6.7
Work Pressure	Bar	8.0
	Psi	115
N.W	kg	24
Dimensions	L*W*H (cm)	58.5x25.5x58
MOQ	20'	360
	40'	720
	40'H	720



Model	DOF1100x2-50	DOF1500x2-50
Tank	L	50
	Gal	12.5
Voltage/Frequency	V/Hz	230/50
Power	kW	1.1*2
	HP	3.0
Speed	rpm	2800
Noise	dB	74
Air Displacement	L/min	380
	CFM	13.4
Work Pressure	Bar	8.0
	Psi	115
N.W	kg	43
Dimensions	L*W*H (cm)	73x33x67
MOQ	20'	160
	40'	330
	40'H	440

Low Noise 2 Pole OILFREE COMPRESSOR



Model		D0F1500-50V
Tank	L	50
	Gal	12.5
Voltage/Frequency	V/Hz	230/50
Power	kW	1.5
	HP	2.0
Speed	rpm	2800
Noise	dB	73
Air Displacement	L/min	250
	CFM	8.8
Work Pressure	Bar	8.0
	Psi	115
N.W	kg	42
Dimensions	L*W*H (cm)	38x37x82
MOQ	20'	160
	40'	330
	40'H	440

BELT OIL LUBRICATED COMPRESSOR



Model		BH65-50	BH65b-50
Tank	L	50	50
	Gal	12.6	12.6
Voltage/Frequency	V/Hz	230/50	230/50
Power	kW	1.8	2.2
	HP	2.5	3.0
Speed	rpm	800	950
Noise	dB	77	77
Air Displacement	L/min	260	370
	CFM	9.2	13.1
Work Pressure	Bar	8.0	8.0
	Psi	115	115
N.W	kg	54	58
Dimensions	L*W*H (cm)	95x38.5x72	95x38.5x72
MOQ	20'	108	108
	40'	222	222
	40'H	222	222



Model		BH65-100	BH65b-100
Tank	L	100	100
	Gal	25.2	25.2
Voltage/Frequency	V/Hz	230/50	230/50
Power	kW	1.8	2.2
	HP	2.5	3.0
Speed	rpm	800	950
Noise	dB	77	77
Air Displacement	L/min	260	370
	CFM	9.2	13.1
Work Pressure	Bar	8.0	8.0
	Psi	115	115
N.W	kg	74	78
Dimensions	L*W*H (cm)	108x45x84	108x45x84
MOQ	20'	50	50
	40'	100	100
	40'H	150	150

BELT OIL LUBRICATED COMPRESSOR



Model	BH65-100V	BH65b-100V
L Tank	100 Gal	100 Gal
Voltage/Frequency	230/50 V/Hz	230/50 V/Hz
Power	1.8 kW 2.5 HP	2.2 kW 3.0 HP
Speed	800 rpm	950 rpm
Noise	77 dB	77 dB
Air Displacement	260 L/min 9.2 CFM	370 L/min 13.1 CFM
Work Pressure	8.0 Bar 115 Psi	8.0 Bar 115 Psi
N.W.	84 kg	88 kg
Dimensions	48x48x92 L*W*H (cm)	48x48x92 L*W*H (cm)
MOQ	20' 40' 40'H	60 120 120



Model	Z1051-40
L Tank	40 Gal
Voltage/Frequency	230/50 V/Hz
Power	0.75 kW 1.0 HP
Speed	950 rpm
Noise	76 dB
Air Displacement	75 L/min 2.6 CFM
Work Pressure	8.0 Bar 115 Psi
N.W.	32 kg
Dimensions	70x38x67 L*W*H (cm)
MOQ	20' 40' 40'H

BELT OIL LUBRICATED COMPRESSOR



Model	BV51-50	BV65-50
L Tank	50 Gal	50 Gal
Voltage/Frequency	230/50 V/Hz	230/50 V/Hz
Power	1.5 kW 2.0 HP	2.2 kW 3.0 HP
Speed	950 rpm	950 rpm
Noise	79 dB	79 dB
Air Displacement	180 L/min 7.4 CFM	280 L/min 10.9 CFM
Work Pressure	8.0 Bar 115 Psi	8.0 Bar 115 Psi
N.W.	56 kg	60 kg
Dimensions	95x38.5x72 L*W*H (cm)	95x38.5x72 L*W*H (cm)
MOQ	20' 40' 40'H	108 222 222



Model	BV51-100	BV65-100
L Tank	100 Gal	100 Gal
Voltage/Frequency	230/50 V/Hz	230/50 V/Hz
Power	1.5 kW 2.0 HP	2.2 kW 3.0 HP
Speed	950 rpm	950 rpm
Noise	79 dB	79 dB
Air Displacement	180 L/min 7.4 CFM	280 L/min 10.9 CFM
Work Pressure	8.0 Bar 115 Psi	8.0 Bar 115 Psi
N.W.	56 kg	60 kg
Dimensions	108x45x84 L*W*H (cm)	108x45x84 L*W*H (cm)
MOQ	20' 40' 40'H	50 100 150



BELT OIL LUBRICATED COMPRESSOR

BELT OIL LUBRICATED COMPRESSOR



Model		W3065-150
Tank	L	150
	Gal	25.2
Voltage/ Frequency V/Hz		230/50
Power	kW	3.0
	HP	4.0
Speed	rpm	950
Noise	dB	79
Air Displacement	L/min	420
	CFM	16.4
Work Pressure	Bar	8.0
	Psi	115
N.W	kg	85
Dimensions L*W*H (cm)		128x50x88
MOQ	20'	40
	40'	80
	40'H	120



Model		BW80-270	BW90-270
Tank	L	270	500
	Gal	71.3	126
Voltage/ Frequency V/Hz		380/50/3Phase	380/50/3Phase
Power	kW	5.5	7.5
	HP	7.5	10.5
Speed	rpm	900	900
Noise	dB	92	93
Air Displacement	L/min	855	1090
	CFM	30.1	38.5
Work Pressure	Bar	8.0	8.0
	Psi	115	115
N.W	kg	239	258
Dimensions L*W*H (cm)		161x54x115	161x54x115
MOQ	20'	30	30
	40'	60	60
	40'H	60	60



Model		BV80-270	BV90-270
Tank	L	270	270
	Gal	71.3	71.3
Voltage/ Frequency V/Hz		380/50/3Phase	380/50/3Phase
Power	kW	4.0	5.5
	HP	5.0	7.5
Speed	rpm	900	900
Noise	dB	92	92
Air Displacement	L/min	570	730
	CFM	20.1	25.7
Work Pressure	Bar	8.0	8.0
	Psi	115	115
N.W	kg	229	239
Dimensions L*W*H (cm)		161x54x115	161x54x115
MOQ	20'	30	30
	40'	60	60
	40'H	60	60



Model		BW90-500
Tank	L	500
	Gal	126
Voltage/ Frequency V/Hz		380/50/3Phase
Power	kW	7.5
	HP	10
Speed	rpm	900
Noise	dB	93
Air Displacement	L/min	1090
	CFM	38.5
Work Pressure	Bar	12.5
	Psi	181
N.W	kg	384
Dimensions L*W*H (cm)		183x70x133
MOQ	20'	18
	40'	36
	40'H	36



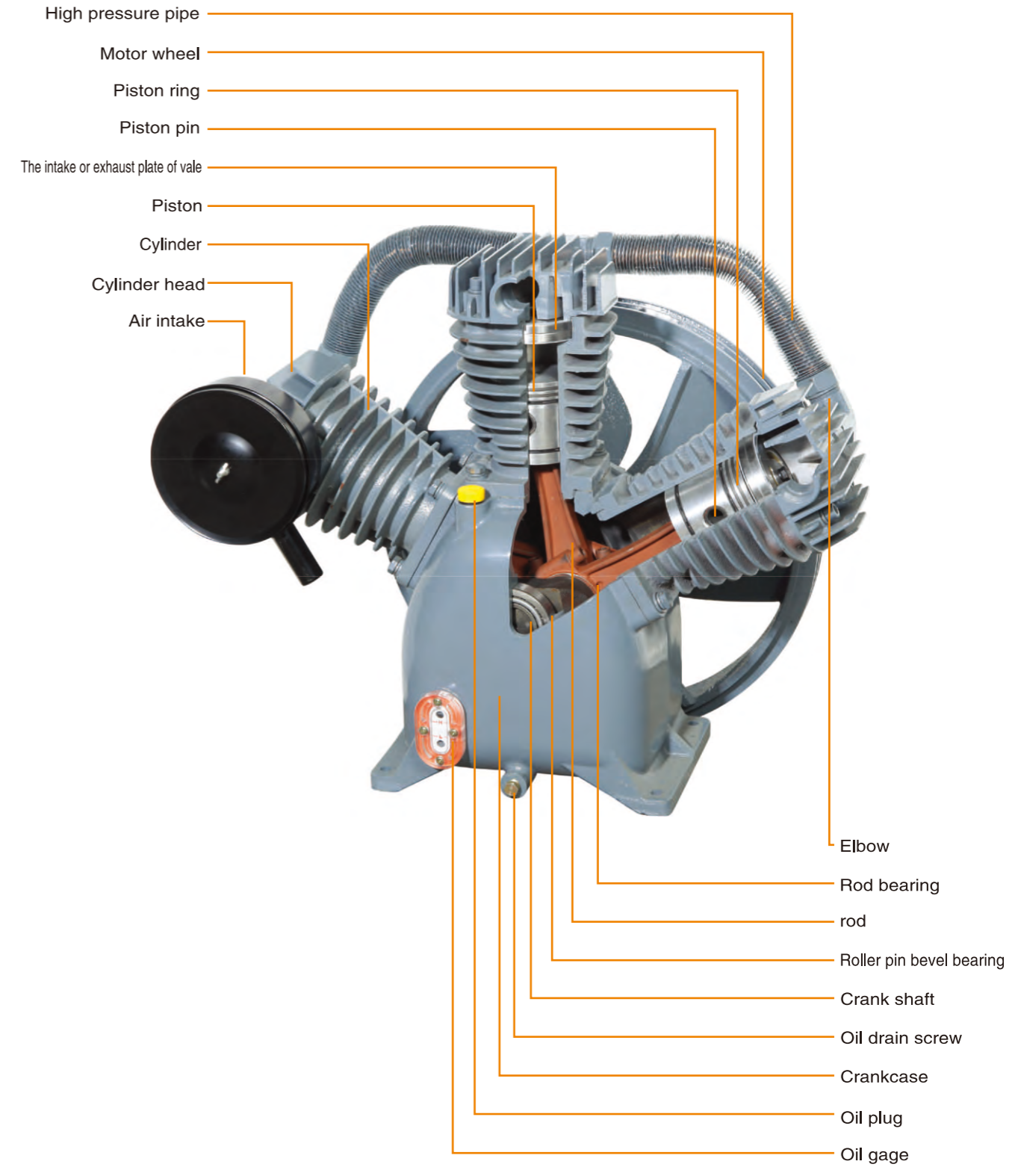
BELT OIL LUBRICATED COMPRESSOR



Model	BH65PE-50	
Tank	L	50
	Gal	12.6
	Voltage/ Frequency V/Hz	
	Bison Petrol Engine	
Power	kW	6.5
	HP	
Speed	rpm	950
Noise	dB	91
Air Displacement	L/min	370
	CFM	13.1
Work Pressure	Bar	8.0
	Psi	115
N.W	kg	54
Dimensions	L*W*H (cm)	
	95x38.5x72	
MOQ	20'	108
	40'	222
	40'H	222



Model	BH65PE-100	
Tank	L	100
	Gal	25.2
	Voltage/ Frequency V/Hz	
	Bison Petrol Engine	
Power	kW	6.5
	HP	
Speed	rpm	950
Noise	dB	91
Air Displacement	L/min	370
	CFM	13.1
Work Pressure	Bar	8.0
	Psi	115
N.W	kg	78
Dimensions	L*W*H (cm)	
	108x45x84	
MOQ	20'	50
	40'	100
	40'H	150



AIR COMPRESSOR HEAD



550W/750W

1.1/1.5KW

TECHNICAL PARAMETER

Model	Power kW HP	Voltage/ Frequency V/Hz	Speed rpm	Air Displacement L/min	Max Pressure bar	Cylinder Dia DB/A	N.W kg	Dimensions L*W*H (cm)
MB550W/E	0.55 0.75	220/380/50	1450	107 3.8	8 115	53	7	270×135×190
MB750W/E	0.75 1.0	220/380/50	1450	138 4.8	8 115	57	8	270×135×215
MB1100W/E	1.1 1.5	220/380/50	1450	200 7.0	8 115	66	15	330×160×285
MB1500W/E	1.5 2.0	220/380/50	1450	245 8.6	8 115	66	17	330×160×285



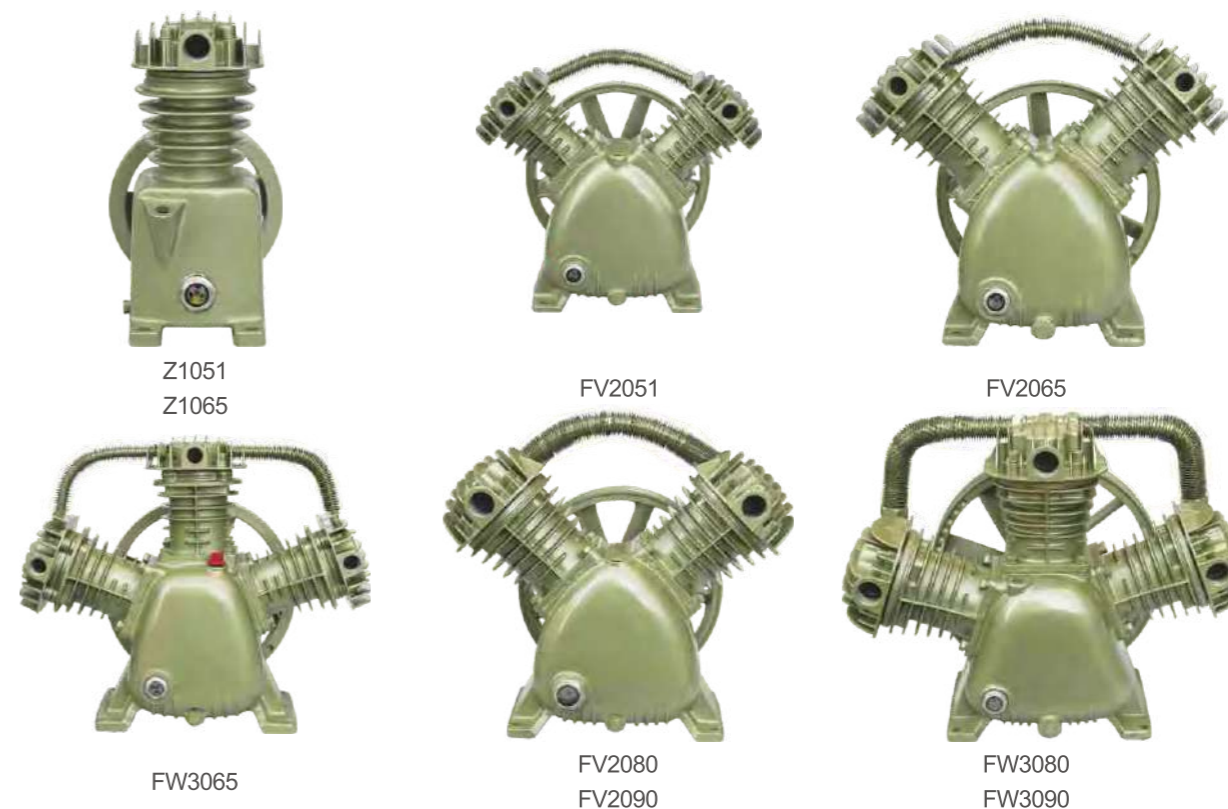
H2065/2070

H2080/2090

TECHNICAL PARAMETER

Model	Power kW HP	Air Displacement L/min	Max Pressure bar	Cylinder Dia DB/A	N.W kg	Dimensions L*W*H (cm)
MB-H2055	1.5 2.0	190 6.7	8	Φ55×2	9	29×23×29
MB-H2060	1.5 2.0	190 6.7	8	Φ60×2	9	29×23×29
MB-H2065	2.2 3.0	250 8.8	8	Φ65×2	10	29×24×31
MB-H2070	2.2 3.0	300 10.6	8	Φ70×2	10	29×24×35
MB-H2080	3.0 4.0	480 16.9	8	Φ80×2	21	39×39×40
MB-H2090	4.0 5.5	600 21.0	8	Φ90×2	22	39×39×40

AIR COMPRESSOR HEAD



Z1051
Z1065

FV2051

FV2065

FW3065

FV2080
FV2090

FW3080
FW3090

TECHNICAL PARAMETER

技术参数

型号 Model	功率/Power kW HP	额定容积流量 Air Displacement L/min	最高压力 Max Pressure bar	机头 Cylinder Dia DB/A	重量 N.W kg	外型尺寸 Dimensions L*W*H (cm)
Z1051	0.75 1.0	36	8	Φ51×1	7.5	21×16×26
Z1065	0.75 1.0	80	8	Φ65×1	9	26×20×29
FV2051	1.5 2	170	8	Φ51×2	15	38×25×34
FV2065	2.2 3.0	250/200	8/12.5	Φ65×2(Φ65×1)	20	39×26×35
FW3065	3.0 4.0	360/280	8/12.5	Φ65×3(Φ65×2)	30	44×28×35
FV2080	4.0 5.5	480/380	8/12.5	Φ80×2(Φ80×1)	34	57×50×45
FV2090	4.0 5.5	600/400	8/12.5	Φ90×2(Φ90×1)	35	57×51×46
FW3080	5.5 7.5	670/530	8/12.5	Φ80×3(Φ80×2)	42	63×54×47
FW3090	7.5 10	900/710	8/12.5	Φ90×3(Φ90×2)	44	63×55×48



压力表
PRESSURE GAUGE



球阀
BALL VALVE



安全阀
SAFETY VALVE



阀板
PLATE



油镜、油封、油塞、呼吸器
OIL LEVEL INDICATOR
OIL SEAL
OIL PLUG
OIL BREATHER



活塞、活塞环
PISTON, PISTON RING



接头
QUICK CINNECT COUPLER



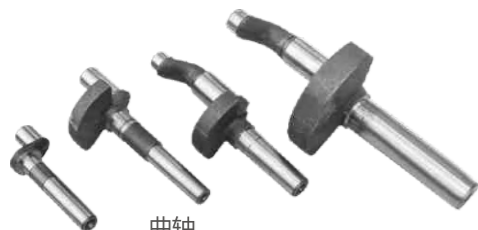
单向阀
NON-RETURN VALVE



消音器
MUFFLER



连杆
CONNECTING ROD



曲轴
CRANKSHAFT



压力开关
PRESSURE SWITCH



调压过滤器
OIL-WATER SEPARATOR

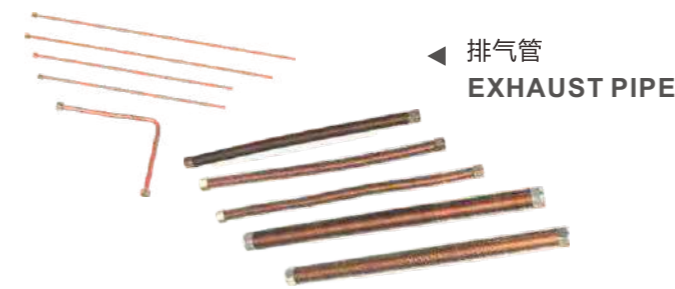
电容
CAPACITOR



电磁保护器
MAGNETIC PROTECTOR



调压阀
REGULATOR ASSEMBLY

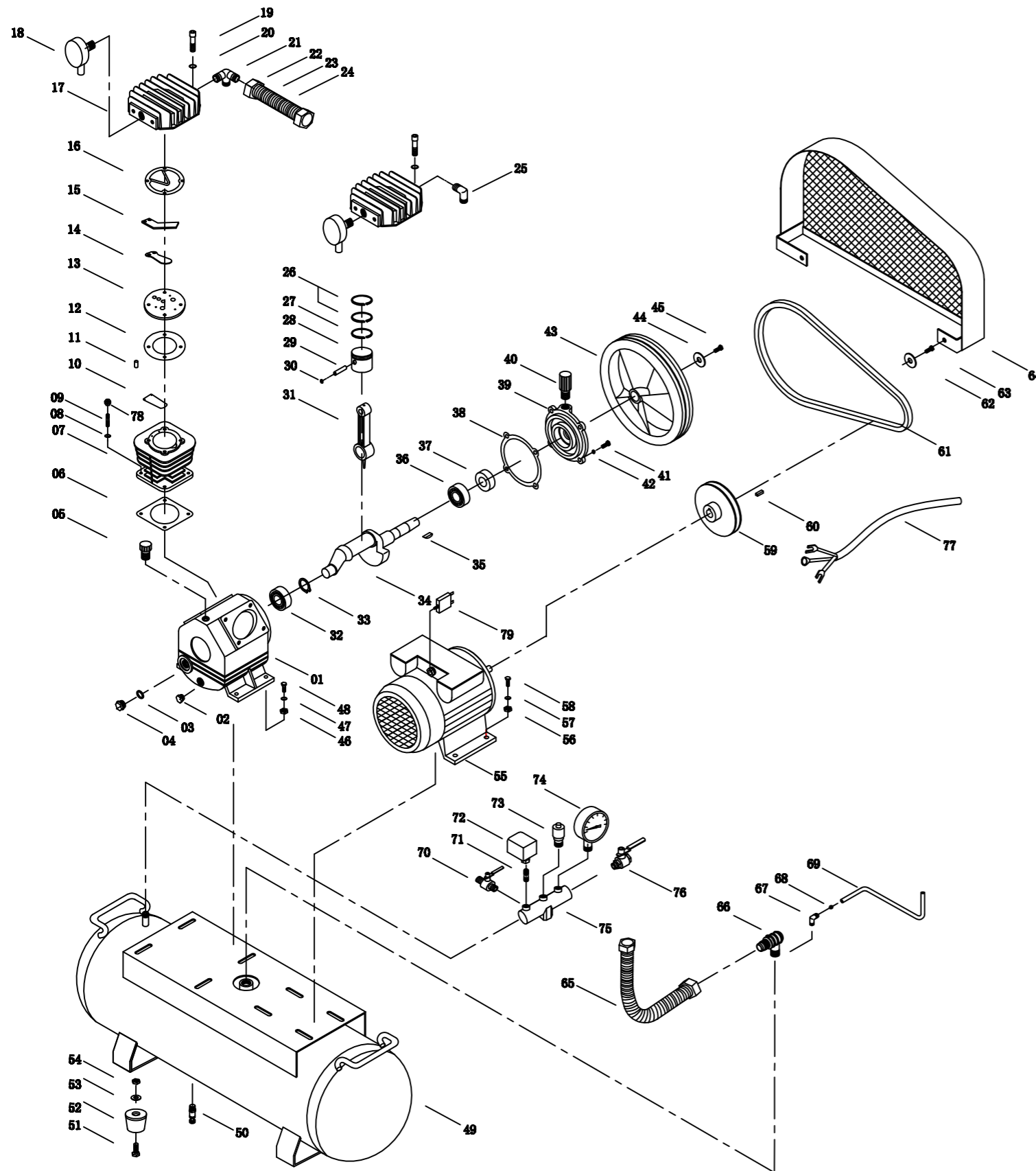


排气管
EXHAUST PIPE



脚轮
WHEEL

2090 Spare Parts List



- | | | |
|-----------------------------|---------------------------|----------------------------|
| 1.Crankcase | 13.Valve plate | 25.Elbow |
| 2.Drain plug | 14.Exhaust valve | 26.Piston ring |
| 3.Oil immersion lens gasket | 15.Valves stopper | 27.Oil ring |
| 4.Oil immersion lens | 16.Cylinder head gasket | 28.Piston |
| 5.Refueling plug | 17.Cylinder head | 29.Piston pin |
| 6.Cylinder head gasket | 18.air filter | 30.Hole retaining ring |
| 7.Cylinder | 19.hex head screw | 31.Connecting rod |
| 8.Spring gasket | 20.Spring gasket | 32.Bearing |
| 9.Double-threaded screw | 21.Three-way elbow | 33.Bearing retaining ring |
| 10.Intake valve films | 22.Iron nut | 34.Bent axle |
| 11.Locating pin | 23.Row cooling tube | 35.Woodruff key |
| 12.Valve gasket | 24.Heat sink | 36.Bearing |
| 37.Oil seal | 49.Tank | 61.V-belt |
| 38.Bearing seat gasket | 50.Drain plug | 62.Flat gasket |
| 39.Bearing seat | 51.Outside hex head screw | 63.Outside hex head screw |
| 40.Breather | 52.Ribber pad | 64.Safety guard |
| 41.Outside hex head screw | 53.Spring gasket | 65.Exhaust coppery pipe |
| 42.Spring gasket | 54.Nut | 66.Check valve |
| 43.Pulley | 55.single-phase motor | 67.Unloading load elbow |
| 44.Big flat gasket | 56.Nut | 68.Unloading locking ring |
| 45.Outside hex head screw | 57.Spring gasket | 69.Unloading pipe |
| 46.Nut | 58.Outside hex head screw | 70.Exhaust valve |
| 47.Spring gasket | 59.Motor pulley | 71.Double-headed connector |
| 48.Outside hex head screw | 60.Flat key | 72.Pressure switch |
| 73.Safety valve | | |
| 74.Pressure gauge | | |
| 75.Beam | | |
| 76.Exhaust valve | | |
| 77.Power line | | |
| 78.Nut | | |
| 79.Motor protector | | |



BISON BRAND DISTRIBUTION MAP



- CHINA
- THAILAND
- CAMBODIA
- NEW ZEALAND
- AUSTRALIA
- SAUDIARABIA
- NIGERIA
- EGYPT
- ETHIOPIA
- SOUTH AFRICA
- ITALY
- UK
- GERMANY
- RUSSIA
- PERU
- ARGENTINA